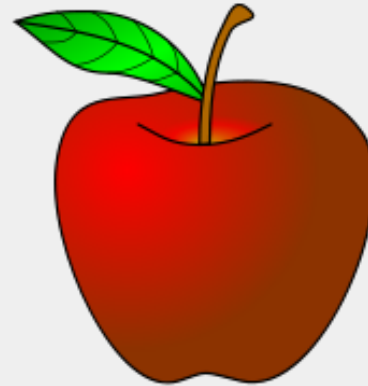


Welcome to West End Primary School



When your child starts Nursery he/she will be in the Nursery, which we call Apple Class. This is part of West End Primary School.



Eligibility for funded places

- If you meet certain criteria you may be eligible for funded places for your child to access 30 hours provision in Nursery.
- You would need to do this now ready for January then reconfirm this each term.
- You would also need to let the school know by contacting Mrs Markham - Lee in the office on 01670 822328.



The Nursery Staff

Miss Sarah
McLeod



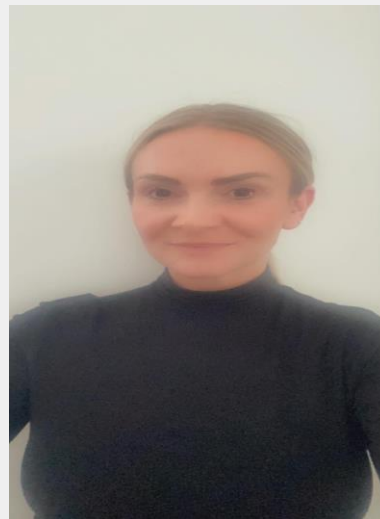
Miss Chloe
Mackie



Miss Emma
Maddison



Mrs Julia Thorne



Our EYFS Ethos

- Awe
- Wonder
- Curiosity
- Creativity
- Connections



Environment

- Natural and authentic furniture
- Items from the natural environment
- Real vegetables and real tools



Our Initial Aims

- Your child feels happy and safe at West End Primary!
- Your child settles into their new routine as quickly as possible.
- Your child starts to bond with other children in their new class.
- We begin to establish a strong, learning partnership with yourselves.
(Website/Facebook/Tapestry/Stay and Plays/Meet the Teacher)



SAFE AND SECURE

The children will have the opportunity to visit to familiarise themselves with their new setting.

All About Me Book . This will help us get to know your child.

Transition meetings between providers.

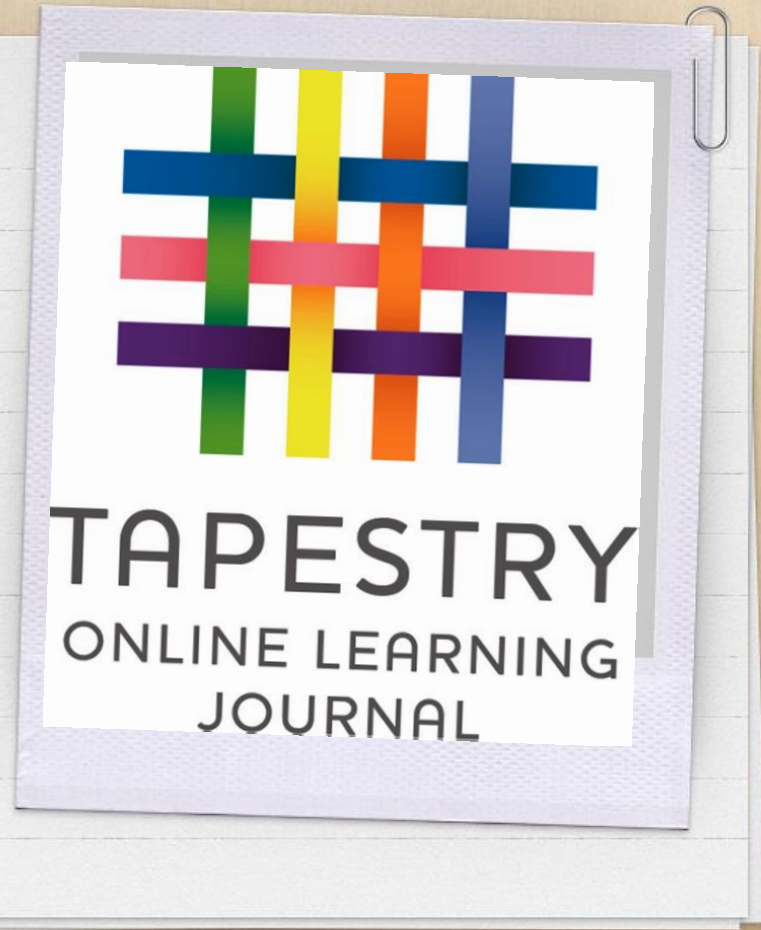
Open door policy. Please just ask!

NEW ROUTINES



- Each child will respond to the challenge of school life in a different way.
- Don't worry if it takes your child more or less time to settle than others.
- You may accompany your child into the Nursery, if your child finds separating with you difficult. We will work with you and your child to support this.

Tapestry



People You Might Meet in Our School



INTRODUCTIONS

Miss Ward
Head Teacher



Mrs Waters
Deputy Head Teacher



Mrs Markham-Lee
School Business Manager



Mrs Cheesman
School Admin Assistant



Mrs Farrell
School Admin Assistant



Miss McLeod's Role

Miss McLeod is our Special Educational Needs and Disabilities Coordinator (SENDCo)



THE EYFS RECEPTION TEAM



Miss Costello
EYFS Lead
Reception
Teacher



Mrs Stewart



Miss Watson

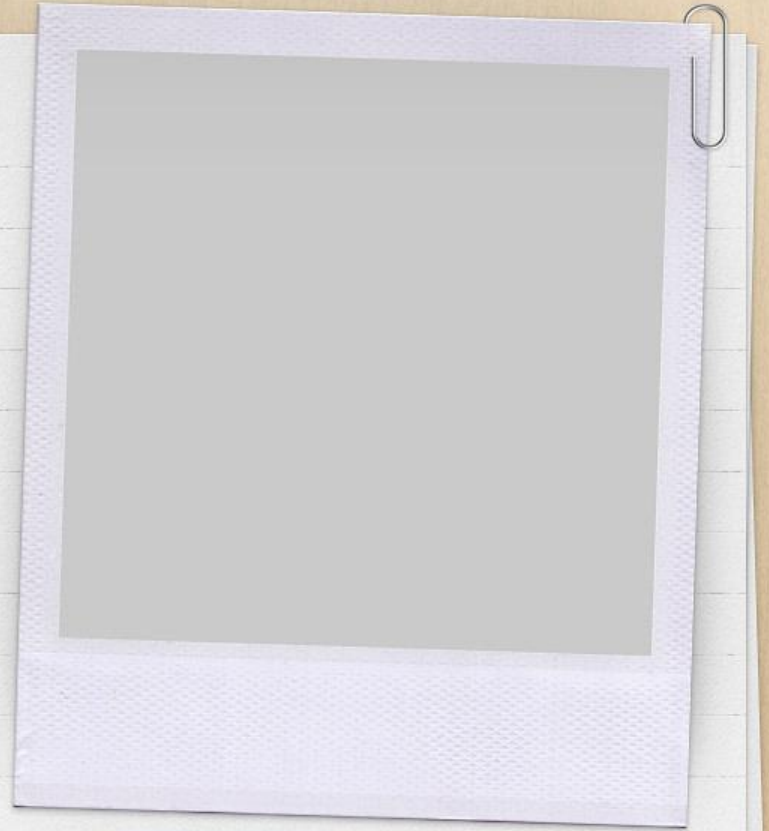
Parent Teachers and Friends Association



Breakfast Club/After School Club

Breakfast Club: runs
from 7.30am - 8.45am

After School Club: runs
from 3.00pm - 6.00pm



Starting Nursery



Building Independence

- Elasticated waistbands
- Velcro
- Toileting



Please name everything!



Lost Property!



What do we need?

Your Child will receive most of the things they need for starting Nursery.

Upon completing your admission forms you will receive:

*A P.E. bag to keep **a spare set of clothes !**



What do you need?

- Your child can bring a water bottle.
- We provide the children with milk.
- We also provide the children with a snack.



What do you need?

Your child will need a spare inhaler or epi-pen to keep in nursery, prescribed by your Doctor, if they require these. A form will need to be complete.

Please identify clearly on the schools admission form that your child has a medical need.



What do you need?

If your child is attending on a morning session or is an all day child you will need to provide a packed lunch or pre-order a school dinner.

The Live Kitchen login details are contained within your pack.



What do you need?

Please read through your pack carefully. The pack contains information regarding

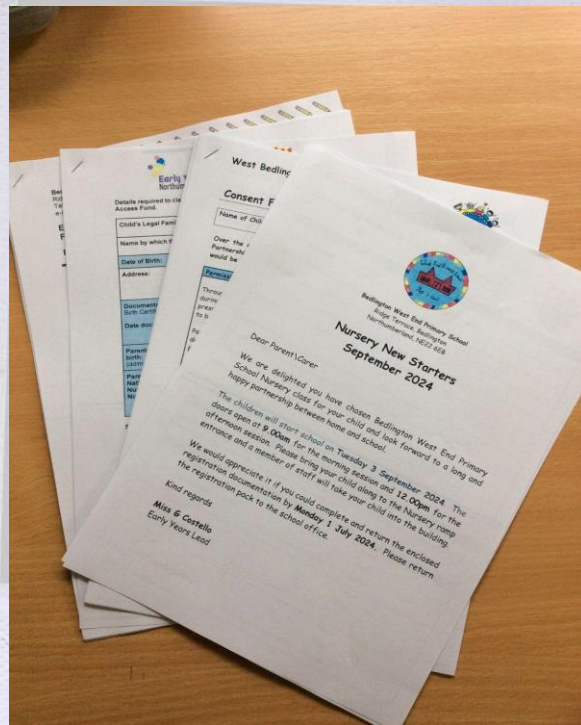
Admission forms

Consent forms

Pupil premium forms

Uniform order forms

School term dates



What do you not need?

Please do not bring in toys from home.



What do you not need?

Please do not send the children in wearing jewellery.



What do you not need?

Please do not send the children to
Nursery wearing their best clothes!



January





Morning start Time



Entering The Building



Lunch

All of the morning children and all day children will have their lunch from 11.30 - 12.00.

You can provide a packed lunch, a small snack or you can order a school dinner for a small charge of £ 2.10

Going home at 12.00



Please wait at
the bottom of the
steps until
we open the door.



Afternoon start Time



Home Time

3.00

Please wait at
the bottom of the
steps until
we open the door.

